

# CUSD Technology Overview





# Technology Overview

- Who we are
  - The Team
- Technology Structure
  - The Nuts & Bolts
- Operating Budget
  - Where the money goes
- Technology Trends in K12 & CUSD
  - Where our peers are vs where we are



# The Tech Department: Who We Are

Jeremy Miller - Director of Information Technology

Andrew Lemenager - Data Technology Specialist

Lisa Nilsen-Raymond - Technology Support Specialist



# The Tech Department: What We Do

Andrew Lemenager - Data Reporting, CALPADS, CELDT(ELPAC), Infinite Campus, Illuminate, SAT/ACT, NutriKids, ASES Attendance Report, CRDC, CBEDS, SEIS, CAASSP State testing, Webmaster

Lisa Nilsen-Raymond - Hardware repair, Inventory Management, New User Account Management (Google, Active Directory, Renaissance, Infinite Campus, Illuminate, Clever) Hardware deployments, Copier Management, Phone System Management, WiFi,

Jeremy Miller - Manage and Support the Team, Direct technology decisions to meet the needs of staff, students and faculty; Train; create and manage report cards in Illuminate, Technology purchases, Security Camera management, Bells & Intercoms



# The Tech Department: Who We Support

4 Buildings

1500+ Students

185+ Staff & Faculty



# The Tech Department: What We Support - Hardware & Extras

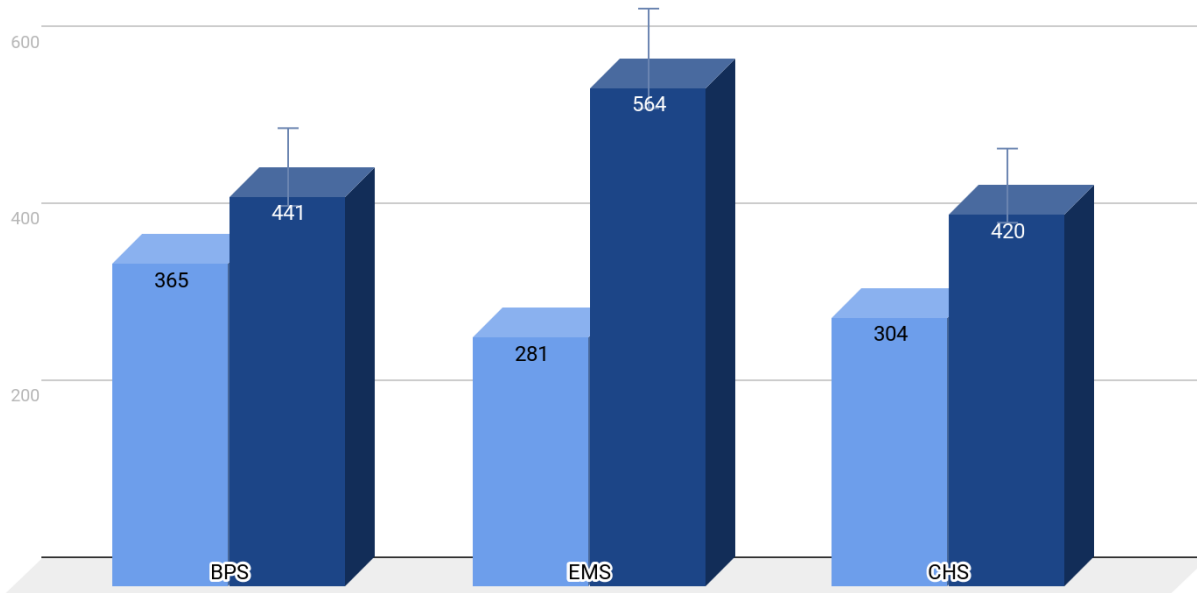
- |          |                              |                           |
|----------|------------------------------|---------------------------|
| 993      | - Chromebooks/Student        | - Crosswalk Signals       |
| Machines |                              | - LED Signs (H.S. & M.S.) |
| 123      | - Staff & Admin Machines     | - Bells & Intercoms       |
| 3        | - Servers                    | - Security Cameras        |
| 39       | - Switches                   | - Live Streaming Events   |
| 96       | - Projectors                 | - Print Shop              |
| 63       | - Networked Printers/Copiers |                           |
| 184+/-   | - Phone Handsets             |                           |



# The Tech Department: What's that look like?

Devices to Student Ratio

■ Student Devices ■ Enrolled Students





# The Tech Department: What We Support - Software & Services

Microsoft Office\*

Illuminate

VEEAM Backup\*

iBoss Content Filter\*

Rosetta Stone\*

Fortinet Firewall\*

Destiny/Follett Library SW

Renaissance AM/AR

Blue Bear TRACKS

Ruckus Diagnostics

SchoolLoop Web Hosting

Lexia

CCOE QSS\*

SolarWinds (switching to different sw)

Infinite Campus - SIS

CCOE CEWAN

Stormwind Online Technical Training

Document Tracking Services

Frontline/Aesop

Inland Print Management

Scanning CUM Folder Project

\* Shared applications throughout County via CEWAN





# The Tech Department: Student Data Management Software

## Current Design:

BPS: Infinite Campus - Attendance, Messaging, Student/Household Information, Behavior  
Illuminate - Gradebook, Assessment Data

EMS: Infinite Campus - 7-8 Gradebook, Attendance, Messaging, Student/Household Information, Behavior, Parent Portal

Illuminate - 4-6 Standards Based Report Cards, Assessments, Gradebooks, Parent Portal  
7-8 Assessments

CHS: Infinite Campus - Attendance, Gradebook, Messaging, Student/Household Information, Behavior, Parent Portal

SchoolLoop - Gradebook, LMS  
Illuminate - Data and Assessments



# The Tech Department: The Budget

Technology Budget to date:

\$15,000 - Conferences, Travel, Training

\$10,000 - General Repairs/Research & Development

\$25,000 - Total for the year

-\$6,000 - Tech Teacher Trainer Stipend

\$19,000

\$10,500 - EMS Chromebook Replacements (35)

\$18,000 - BPS Chromebook Replacements (60)



# The Tech Department: The Budget

Technology Reserve Budget to date:

\$30,000<sub>+/-</sub> - Staff & Teacher Computer Updates (36)

\* Remainder of Teacher Computers Updated next year



# The Tech Department: The Budget

The Other Stuff:

Phone System

Printers

Servers

Network Switches, Routers & Cabling

UPS

Carts



# The Tech Department: What are the trends? What are other districts doing?

5 K12 Trends -

1 - Chromebooks

2 - Blended Learning, Mix of Online/In Classroom teaching environment

3 - STEM/Coding/Robotics(AI)

4 - Single Sign On, Software Unification, Interoperability, Consolidation

5 - Wireless & Cloud based solutions