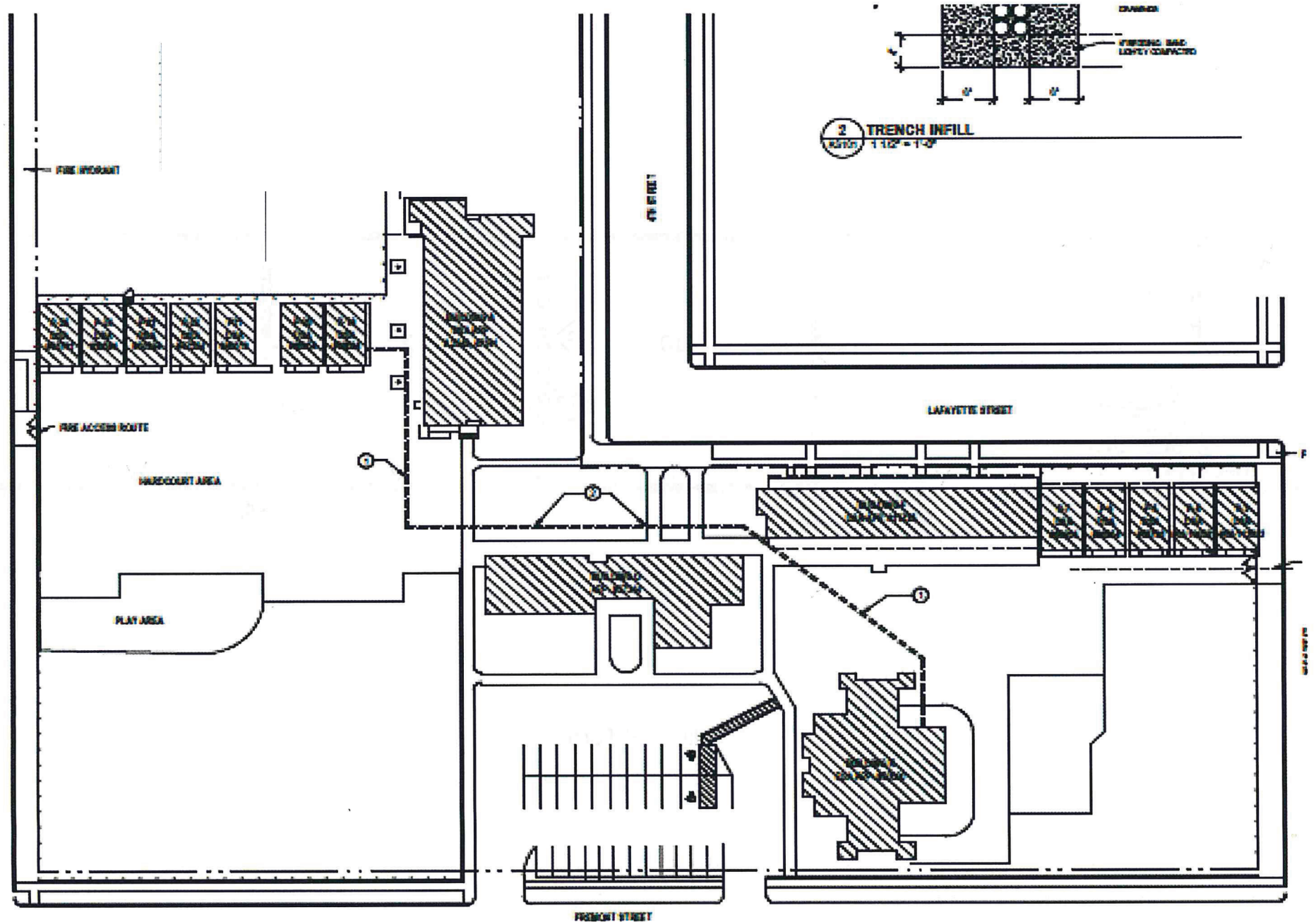
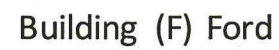


# Burchfield Primary School



Number in box indicates quantity of cables at this location (typ each room) with surface mounted raceway



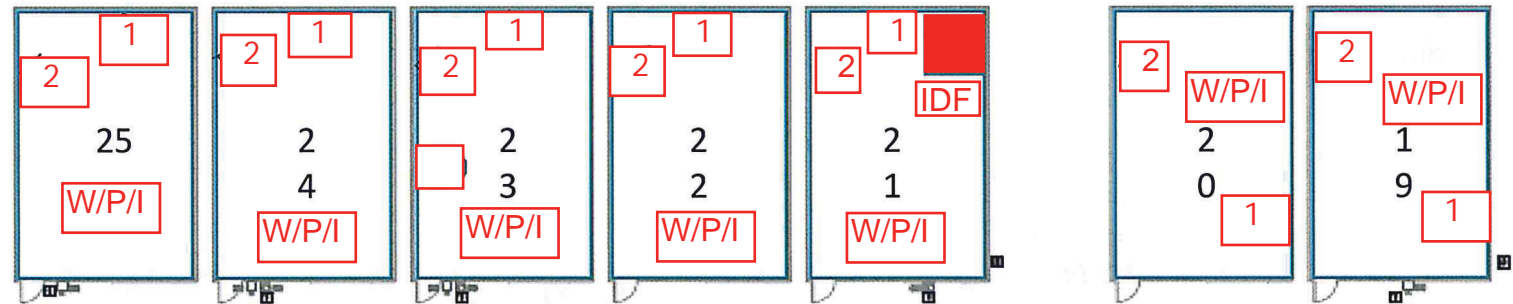
W = Wireless Access Point 1 CAT6A

P = Projector 1 CAT6A

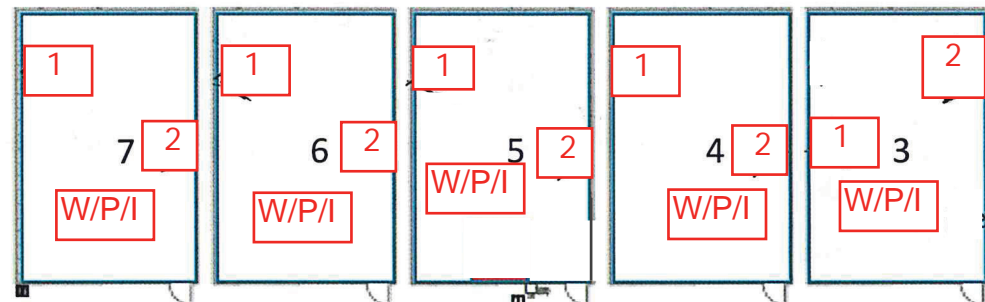
I = Intercom/paging network interface box 1 CAT6

Number in box indicates quantity of cables at this location (typ each room) with surface mounted raceway

## BPS Portables



**A** NORTH PORTABLES FIRE ALARM PLAN - DEMOLITION  
SQUAD - 11P



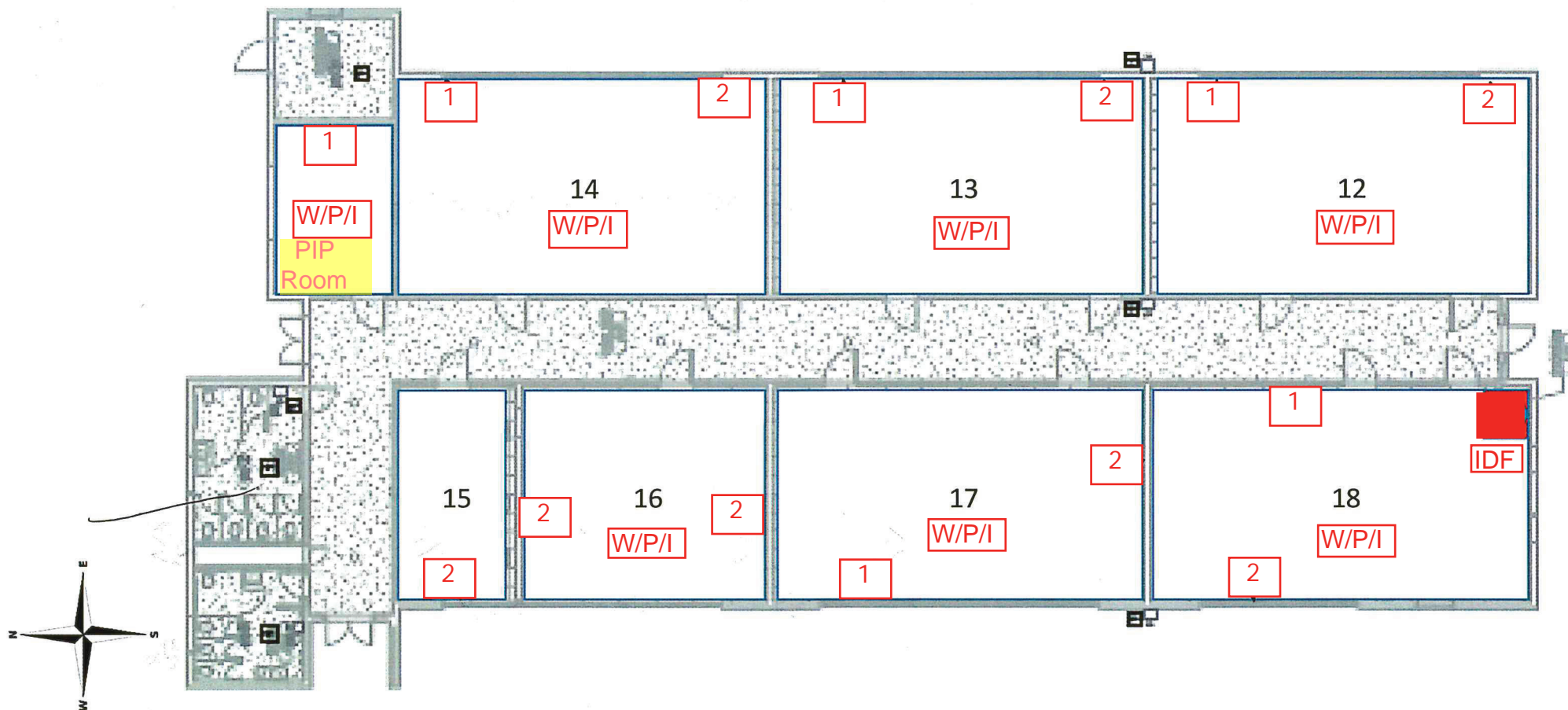
W = Wireless Access Point 1 CAT6A

P = Projector 1 CAT6A

I = Intercom/paging network interface box 1 CAT6

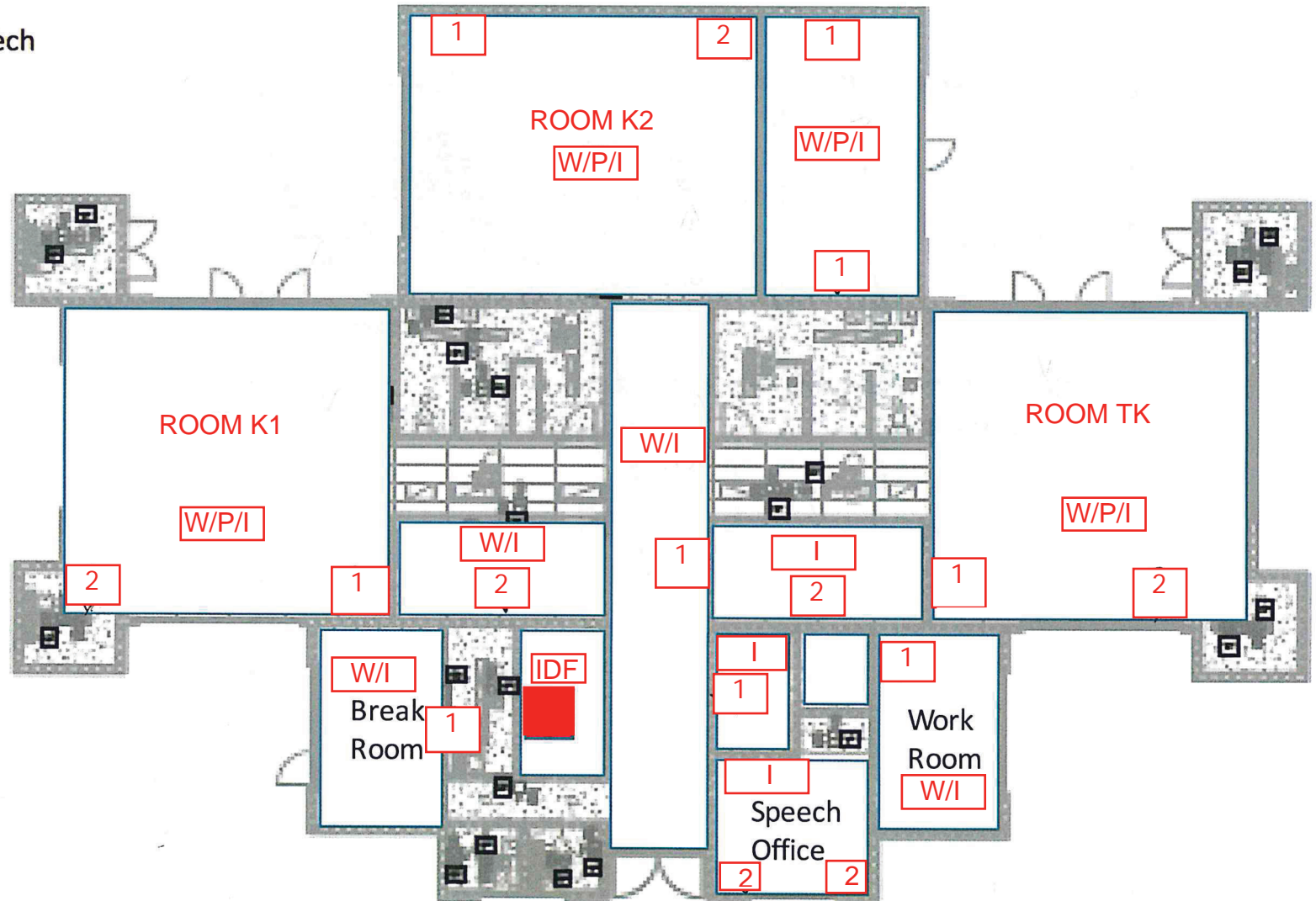
Number in box indicates quantity of cables at this location (typ each room) with surface mounted raceway

## Building Annex





Number in box indicates quantity of cables at this location (typ each room) with surface mounted raceway

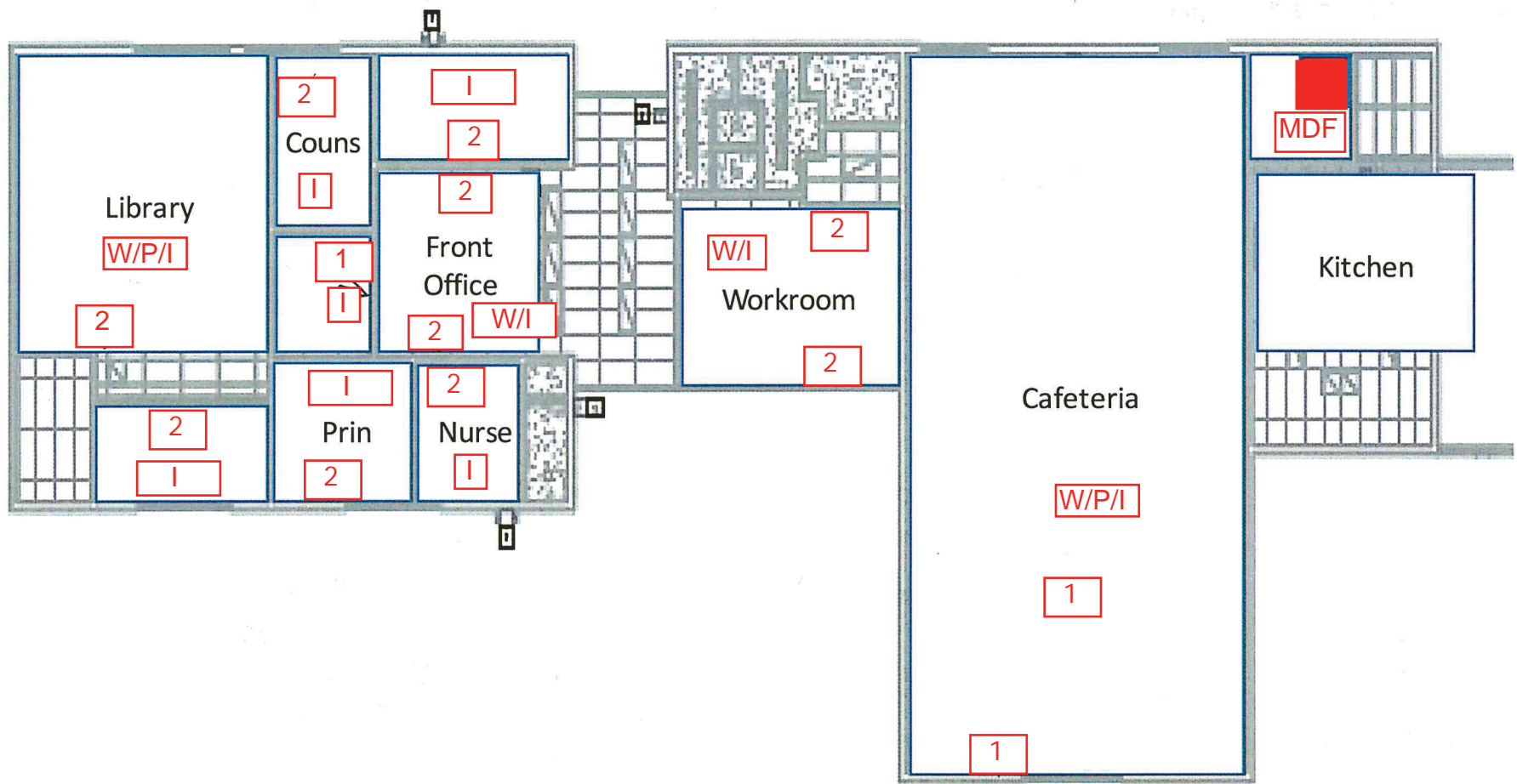


W = Wireless Access Point 1 CAT6A

P = Projector 1 CAT6A

I = Intercom/paging network interface box 1 CAT6

Number in box indicates quantity of cables at this location (typ each room) with surface mounted raceway



Building 500