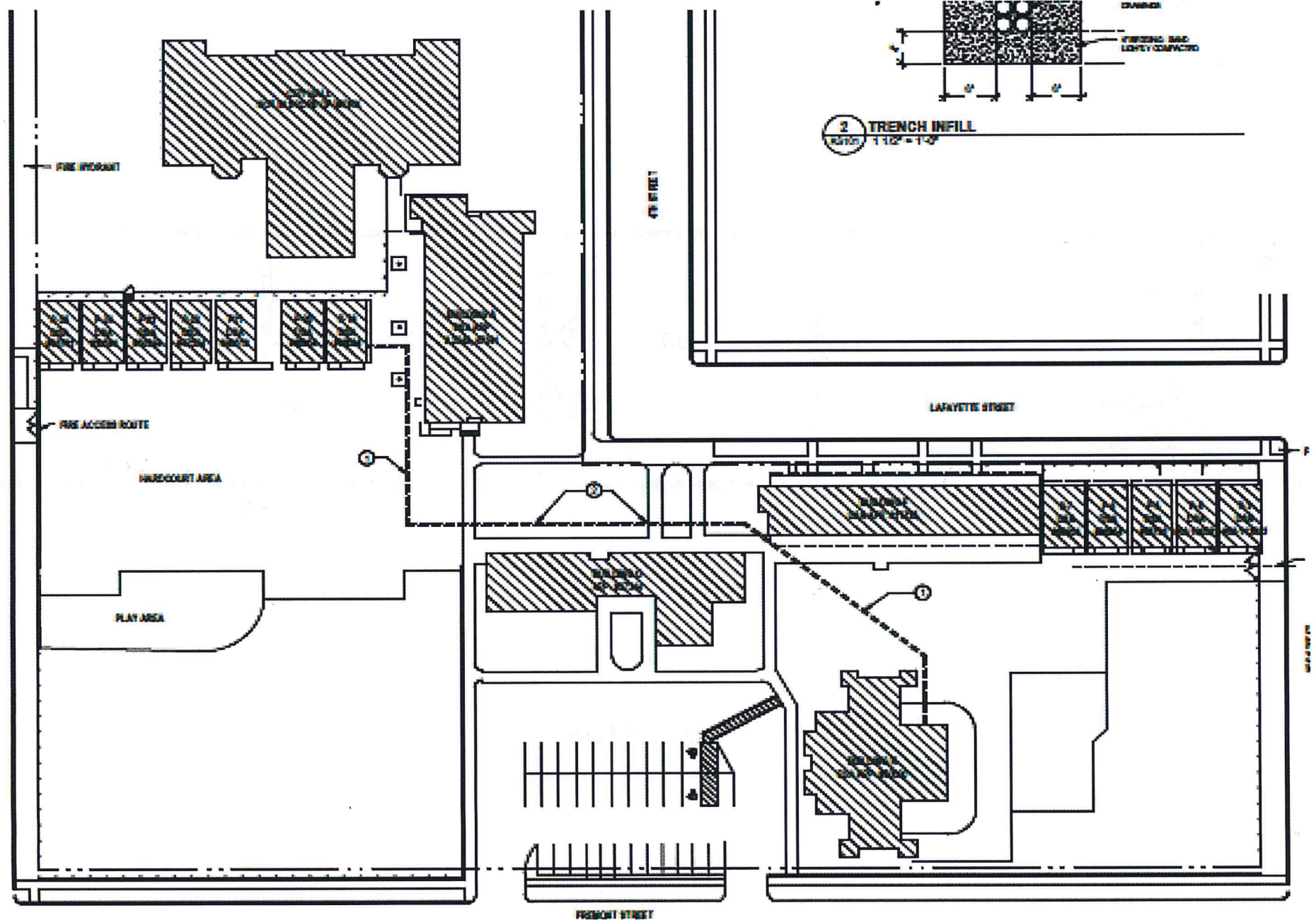


# Burchfield Primary School

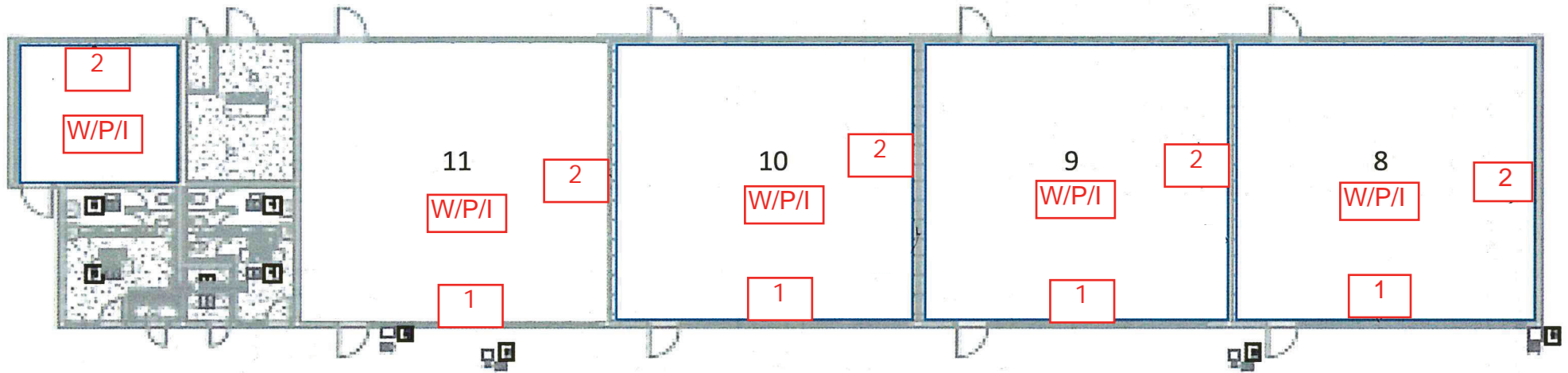


W = Wireless Access Point 1 CAT6A

P = Projector 1 CAT6A

I = Intercom/paging network interface box 1 CAT6

Number in box indicates quantity of cables at this location (typ each room) with surface mounted raceway



Building (F) Ford

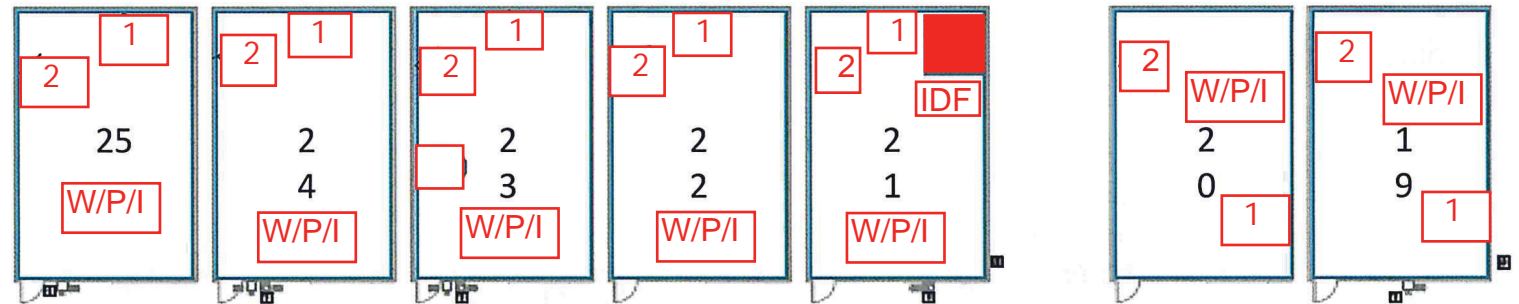
W = Wireless Access Point 1 CAT6A

P = Projector 1 CAT6A

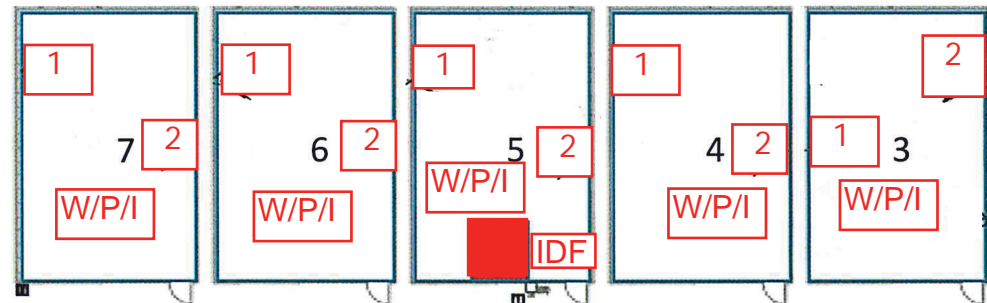
I = Intercom/paging network interface box 1 CAT6

Number in box indicates quantity of cables at this location (typ each room) with surface mounted raceway

## BPS Portables



**A** NORTH PORTABLES FIRE ALARM PLAN - DEMOLITION  
SQUAD - 11P



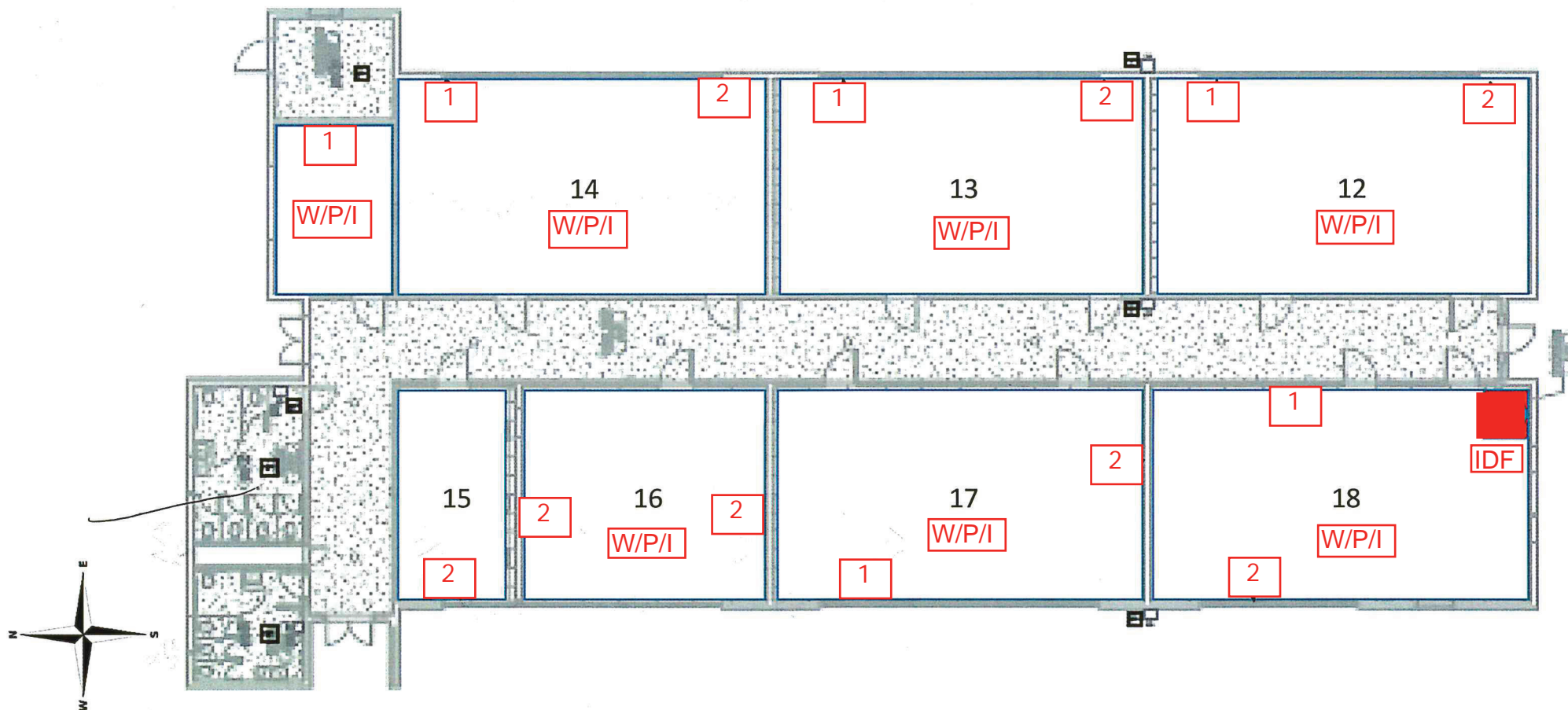
W = Wireless Access Point 1 CAT6A

P = Projector 1 CAT6A

I = Intercom/paging network interface box 1 CAT6

Number in box indicates quantity of cables at this location (typ each room) with surface mounted raceway

## Building Annex





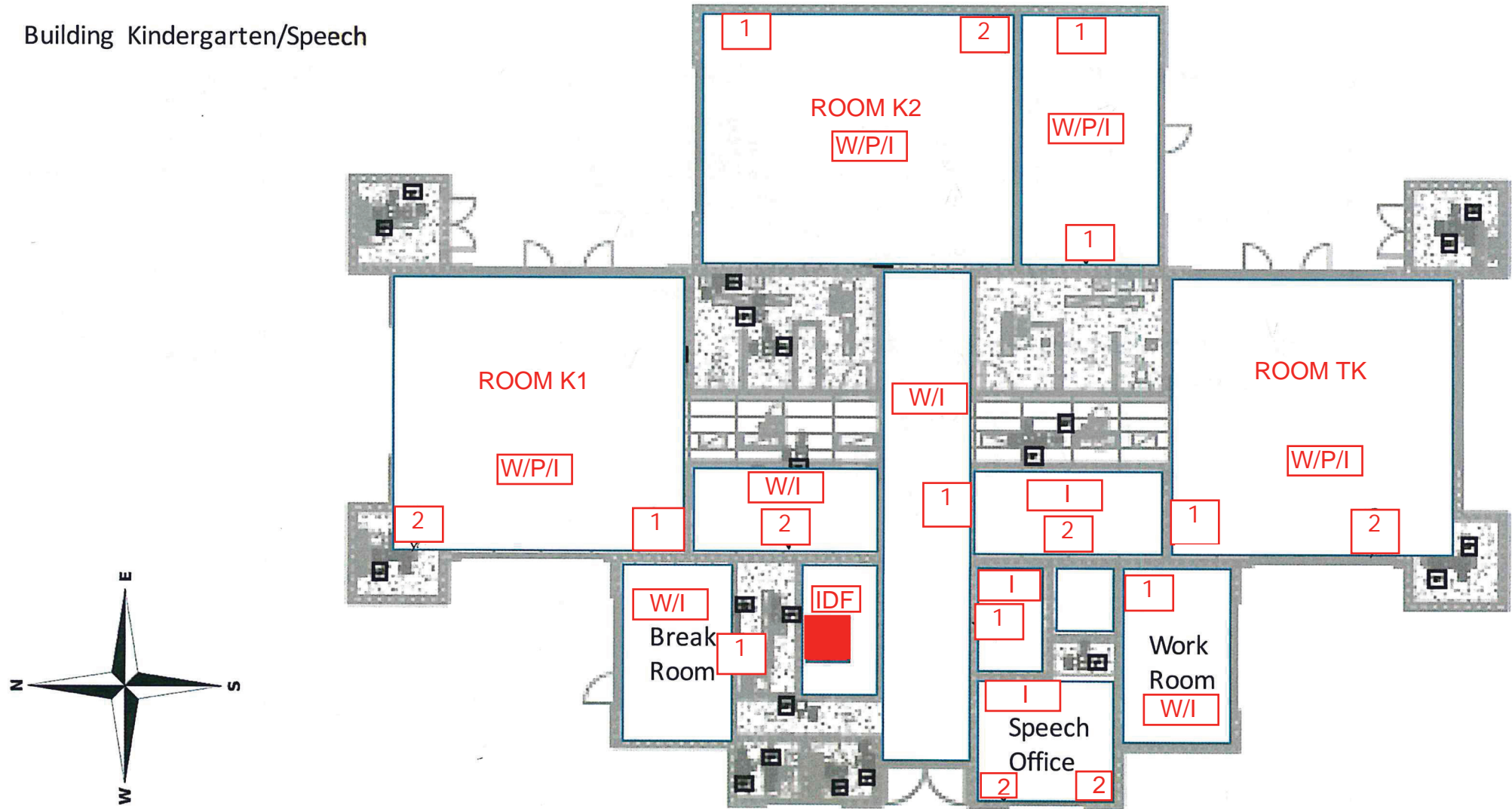
W = Wireless Access Point 1 CAT6A

P = Projector 1 CAT6A

I = Intercom/paging network interface box 1 CAT6

Number in box indicates quantity of cables at this location (typ each room) with surface mounted raceway

## Building Kindergarten/Speech

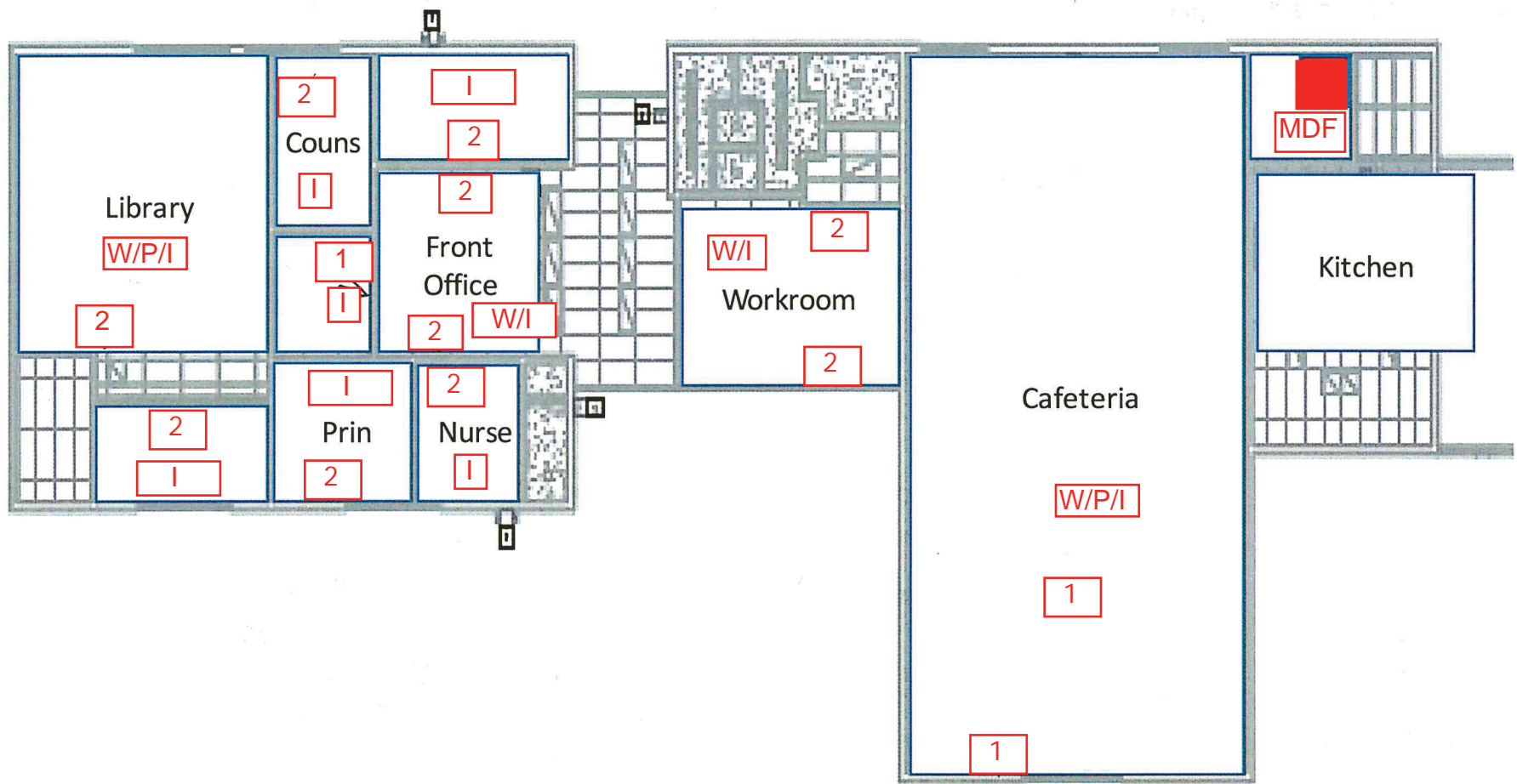


W = Wireless Access Point 1 CAT6A

P = Projector 1 CAT6A

I = Intercom/paging network interface box 1 CAT6

Number in box indicates quantity of cables at this location (typ each room) with surface mounted raceway



Building 500